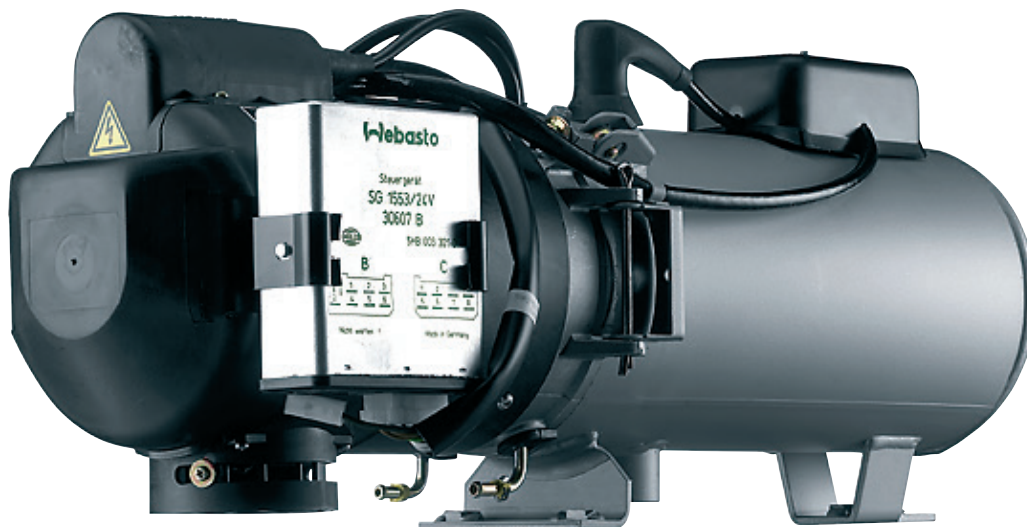


# Marine Coolant Heaters

Ultimate on-board heating solutions

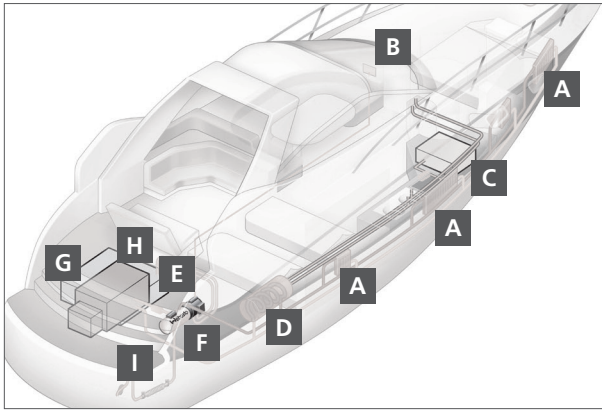


## Delivering the ultimate on-board heating solutions.

Webasto Marine Coolant Heaters are an excellent addition to any vessel. They provide on-board hot water for the galley and head, and can also deliver warm air to the cabins and compartments to keep the crew comfortable.

- Heats cabin interiors and provides potable water for shower and galley
- High heat output in a compact design
- Models with up to 120,000 Btu available
- Low fuel and electrical power consumption
- Even distribution of warm air
- Quiet operation
- Space-saving installation
- Excellent opportunity to combine with the BlueCool air conditioning systems
- Separate temperature control in every cabin
- Compact design
- Robust aluminum casing, resistant to high temperatures or salt
- Meets current boating requirements and standards

### Installation example for Coolant Heater:



- A** Temperature of each radiator can be controlled separately
- B** Controls - simple and easy to use
- C** Fresh water tank
- D** Reservoir hot water boiler (optional)
- E** Circulating pump (attached to heater)
- F** Space-saving and inconspicuous installation in engine room
- G** Engine
- H** Fuel Tank
- I** Stainless steel exhaust with heat shield (optional)

### Technical Specifications:

Model	Thermo Pro 90	DBW 2010	Thermo 230 / Thermo 300
Heater Only	5011094A (12 V) 5011095A (24 V)	89235B (12 V) 922502 (24 V)	63647C (24V) / 63650C (24 V)
C <sup>5</sup> Kit	N/A	5001013A (12 V)	N/A
Heat Output	Boost: 31,000 BTU (9.1 kW)	45,000 BTU (11.6 kW)	80,000 BTU (23 kW)
	Operating Range: 6,100–26,000 BTU (1.8–7.6 kW)		104,000 BTU (30 kW)
Fuel	Diesel 1, Diesel 2, Arctic, Kerosene		
Fuel Consumption	Boost: 0.29 gal/h (1.1 l/h)	0.4 gal/h (1.5 l/h)	0.65 gal/h (2.5 kg/h)
	Operating Range: 0.05–0.23 gal/h (0.19–0.9 l/h)		0.85 gal/h (3.3 kg/h)
Rated Power Consumption	Boost: 90 W	60 W (without Circulating Pump)	65 W (without Circulating Pump)
	Operating Range: 37–83 W		110 W (without Circulating Pump)
Flow Rate of Circulating Pump	7.3 gal/min (1650 l/h)(U4846 against 0.3 psi)	7 gal/min (1,590 l/h)(U4846 against 0.15 psi)	23.3 gal/min (5,300 l/h)(U4814 against 0.15 psi)
			26.7 gal/min (6,057 l/h)(U4851 against 0.4 psi)
Heater Dimensions (LxWxH)	15 x 5.5 x 9.13 in (381 x 140 x 232 mm)	23 x 8 x 9 in (584 x 205 x 228 mm)	24 x 9.7 x 8.7 in (610 x 246 x 220 mm)
Weight	10.8 lbs (4.9 kg)	33 lbs (15 kg)	42 lbs (19 kg)

Webasto Thermo & Comfort  
North America, Inc.

15083 North Road  
Fenton, Michigan 48430  
USA

Toll Free: 800-860-7866  
Phone: 810-593-6000



www.webasto.com